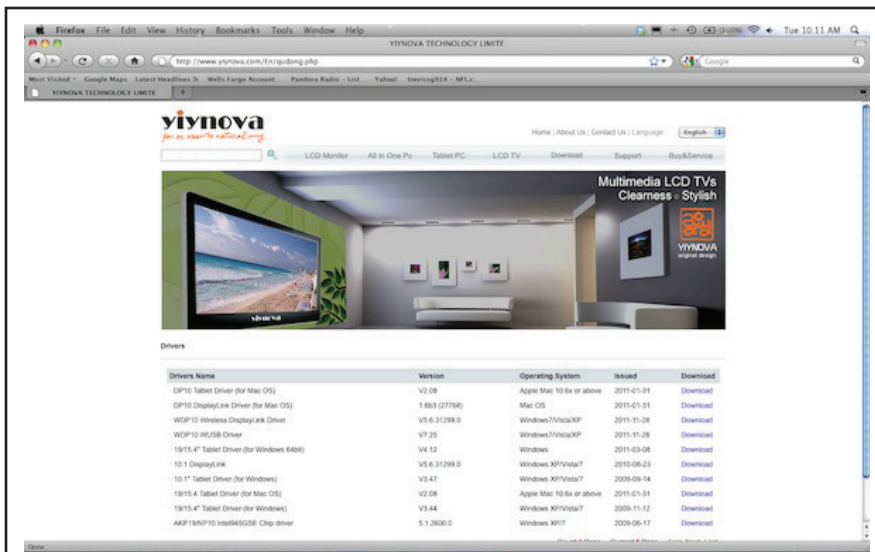


# Yiynova 19"

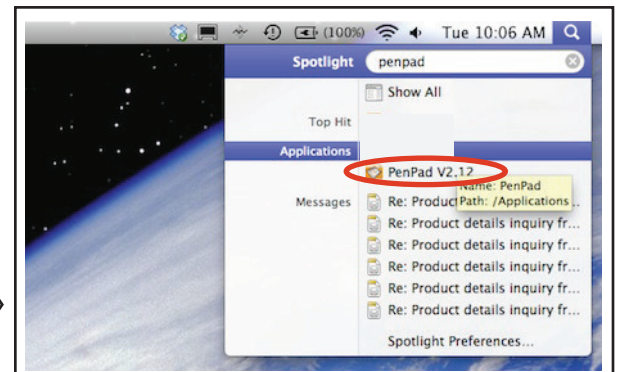


## User Installation Guide Mac OS X 10.6.8





Before you connect the Yinyova to your laptop, you must download and install the Driver from [www.Yinyova.com](http://www.Yinyova.com).  
Once you access the website click the "Download" button and select "Driver". Choose the one that best matches your new hardware.



Once the driver is installed you can find it by searching for PenPad in spotlight.  
- PenPad v2.08 or PenPad v2.12

Follow the prompts to complete installation.



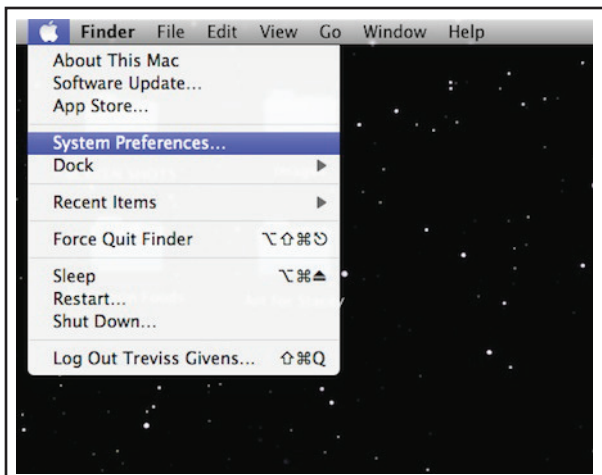
If your laptop does not have a VGA port you will need an adapter similar to the one above.  
These can be found for \$5.00 or less online.



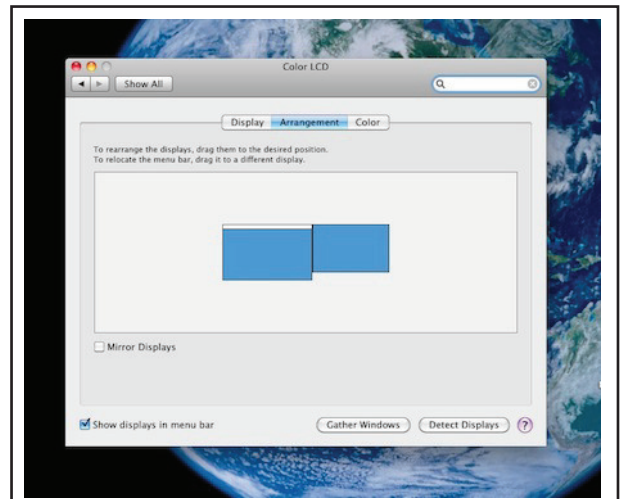
Connect the Yinyova's VGA male plug into the VGA female plug on the adapter and the DVI male into your laptop.



If the Yinyova is connected properly it should look like the image to the left. The DVI/VGA port allows your Yinyova to display images from the laptop. The USB port allows the laptop to register the pens pressure.



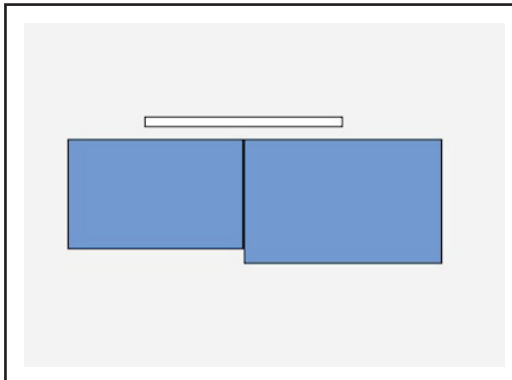
With the Yiynova connected you can adjust your LCD screen preferences. First click on the “Apple” icon and select “System Preferences” then select “Displays”.



Once in the “Displays” panel, select “Detect Displays” if your Yiynova screen is not already active.

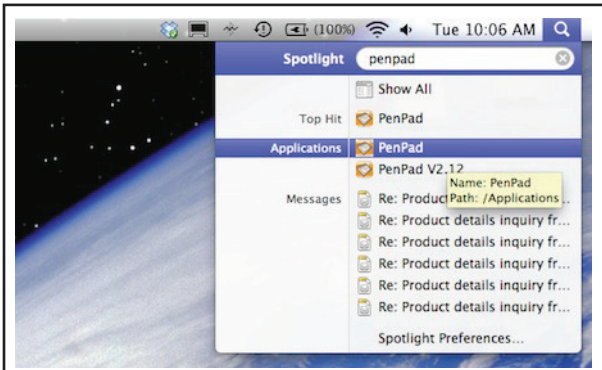
“Mirroring” is also controlled through this panel. Check the “Mirror Displays” box to activate Mirror mode.

You can also calibrate the pen in Extended Mode by making Yiynova your primary monitor.



To make the Yiynova the primary monitor in Extended Mode click and drag the white bar from one display to the other.

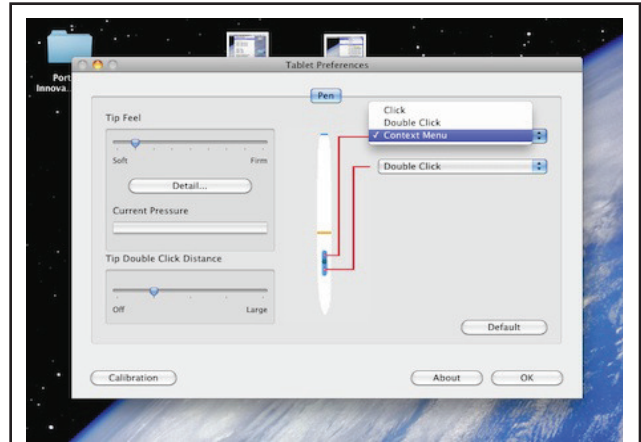
Extended Mode (default)	Mirror Mode
<p>With “Mirror” off your Yiynova will act as an extended monitor.</p> <p>Each displays resolution and wallpaper can be adjusted independently in this mode. Files can be moved from one display to the other.</p> <p><b>To calibrate the pen you must make the Yiynova your primary monitor.</b></p>	<p>In Mirror Mode both displays will reflect the same information.</p>



With the screen options set you're ready to calibrate the Yiynova Pen Tablet.

Search PenPad again and select the installed driver. This time you want to select "PenPad" next to Application. If it's not there, download the driver again.

Once selected, "Tablet Preferences" will open.



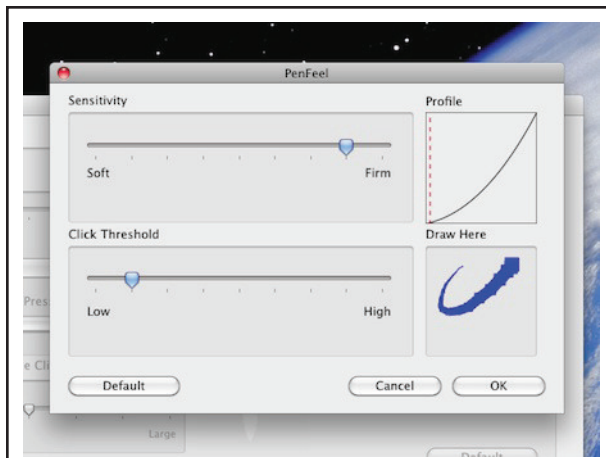
Tablet Preferences allows you to adjust pen pressure, set pen buttons and calibrate your Yiynova Pen.

Either button can be set to Click, Double Click or Context Menu.

Context Menu = right mouse button on PC

Calibrate the pen by clicking the "Calibration" button in the bottom left corner.

Follow the prompts.



Once calibration is complete click on the "Detail" to fine-tune the feel of the pen pressure.

Adjust the setting then draw in the "Draw Here" pad until the pen pressure feels satisfactory.

You are now ready to use your Yiynova Pen Tablet.

For further assistance please contact Yiynova customer support.